



**Subdivision Authority Agenda
Friday June 27th, 2025**

1. The Subdivision Authority will review the following proposed Subdivision on June 27, 2025

a. SDA-24-03 Place Chaleureuse Phase 7A

Tentative plan to subdivide to terminate condominium Units 1 and A of Plan 212 0339 to create 1 commercial lot and 1 residential lot

- *Attachments: Location Map and Tentative Subdivision Plan*

2. The Subdivision Authority's decision will be posted the week of June 30, 2025

Contact the File Planner at planning@beaumont.ab.ca or 780-929-8782 for more information



Location Map - Place Chaleureuse Phase 7A

Numeric Scale:
1:3,500

Date - mm/dd/yr
02/27/2024

Mapped by:
Uche.D

Projected Coordinate System:
CANADA NAD 83-3TM-114

Subdivision Application No:
SDA-24-03

Checked by:
Georgina.C

Disclaimer:

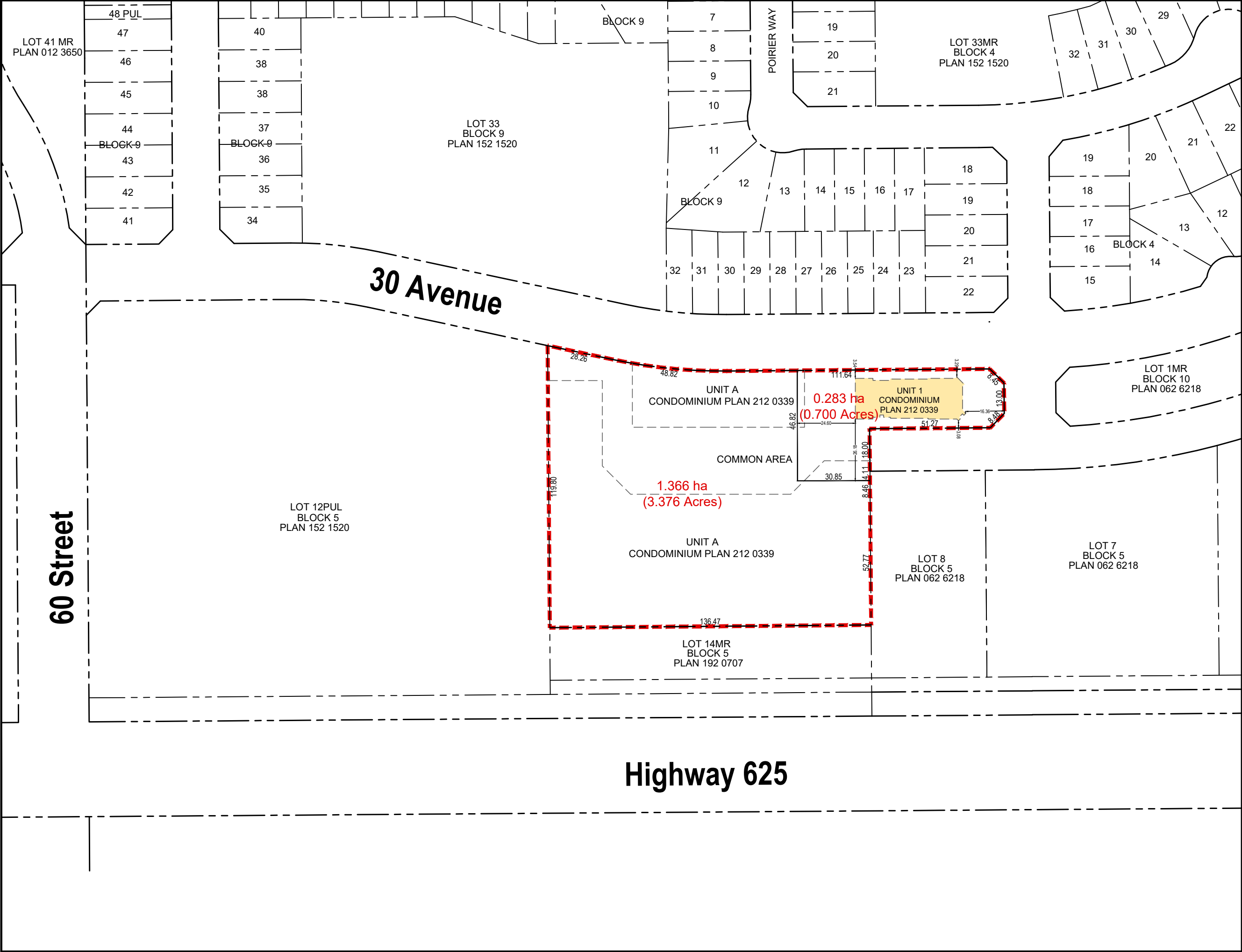
ALL RIGHTS RESERVED. NO PART OF THIS MAP MAY BE REPRODUCED IN ANY FORM OR BY ANY MEANS WITHOUT THE WRITTEN CONSENT OF THE CITY OF BEAUMONT. THE CITY OF BEAUMONT PROVIDED THIS INFORMATION IN GOOD FAITH, BUT PROVIDES NO WARRANTY NOR ACCEPTS ANY LIABILITY ARISING FROM INCORRECT, INCOMPLETE OR MISLEADING INFORMATION OR ITS IMPROPER USE. INFORMATION IS MAINTAINED ON A REGULAR BASIS. DO NOT REPRODUCE WITHOUT PERMISSION.
City of Beaumont 5600 49 Street Beaumont Alberta T4X 1A1 Telephone: 780-929-8782 Web: www.beaumont.ab.ca

Legend

- Place Chaleureuse Phase 7A
- Registered Parcels



City of Beaumont
5600 49 Street
Beaumont, AB
T4X 1A1



Legend

- Subdivision Boundary
- Existing Subdivision Lines
- Proposed Subdivision Lines
- Existing Building

NOTES:
ALL DISTANCES ARE SHOWN IN METRES AND DECIMALS THEREOF. DISTANCES ON THE CURVED BOUNDARIES ARE ARC LENGTHS. AREA DEALT WITH BY THIS PLAN SHOWN BOUNDED THUS AND CONTAINS: 1.65 ha.

THIS IS A CONCEPT PLAN ONLY. SUBJECT TO CHANGE.

DATE: February 12, 2024

PROJECT MANAGER: REUBEN_ROSS

CLIENT: PLACE DU MARAIS LP

PROJECT: DU MARAIS COMMERCIAL
DRAWING TITLE: TENTATIVE PLAN OF SUBDIVISION

PROJECT /DRAWING NO. 2023-046/001

SCALE
0 15 30 45 60 75
1:1500



Invistec Consulting Ltd.
Suite 1700, 10130 - 103 Street NW
Edmonton, Alberta, T5J 3N9
(780) 293 - 7373
www.invistec.ca

THE CONTRACTOR SHALL VERIFY AND BE RESPONSIBLE FOR ALL DIMENSIONS. DO NOT SCALE THE DRAWING. ANY ERRORS OR OMISSIONS SHALL BE REPORTED TO INVISTEC CONSULTING LTD. AS SOON AS POSSIBLE.
THE COPYRIGHTS TO ALL DESIGNS AND DRAWINGS ARE THE PROPERTY OF INVISTEC CONSULTING LTD. REPRODUCTION OR USE FOR ANY PURPOSE OTHER THAN THAT AUTHORIZED BY INVISTEC CONSULTING LTD. IS PROHIBITED.