



**Subdivision Authority Agenda
Friday May 16, 2025**

1. The Subdivision Authority will review the following proposed Subdivisions on May 23, 2025

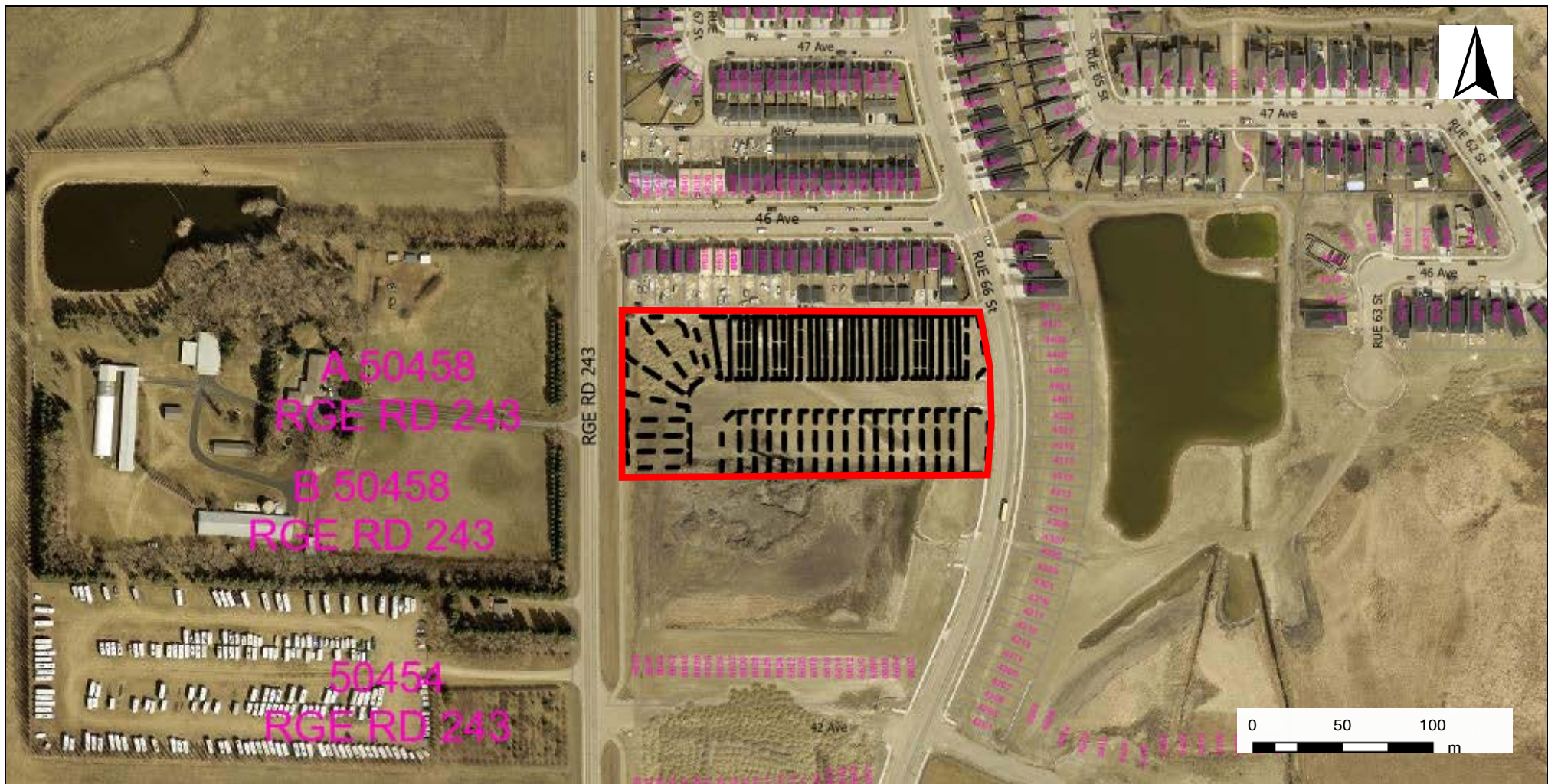
a. SDA-24-20 Ruisseau Phase 8B

Tentative plan to subdivide a portion of N.w. ¼ Sec. 27-50-24-W4M into 24 Single Side Yard lots and 30 multi-attached lots

- *Attachments: Location Map and Tentative Subdivision Plan*

2. The Subdivision Authority's decision will be posted the week of May 26, 2025

Contact the File Planner at planning@beaumont.ab.ca or 780-929-8782 for more information



City of Beaumont
5600 49 Street
Beaumont, AB
T4X 1A1

Location Map - Ruisseau Stage 8B

A portion of N.W. 1/4 Sec. 27-50-24-W4M

Application No.

SDA-24-20

Mapped By:

Aleshia Ingram

Checked By:

Yasmin Sharp

Numeric Scale

1: 3214

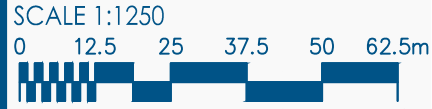
Date

Tuesday, December 17, 2024

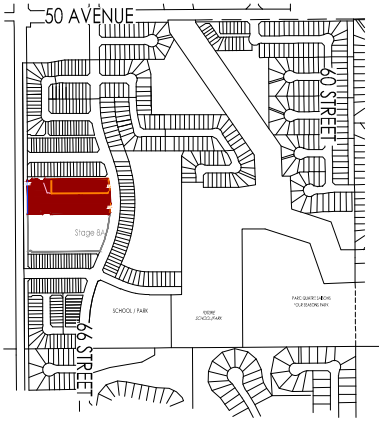
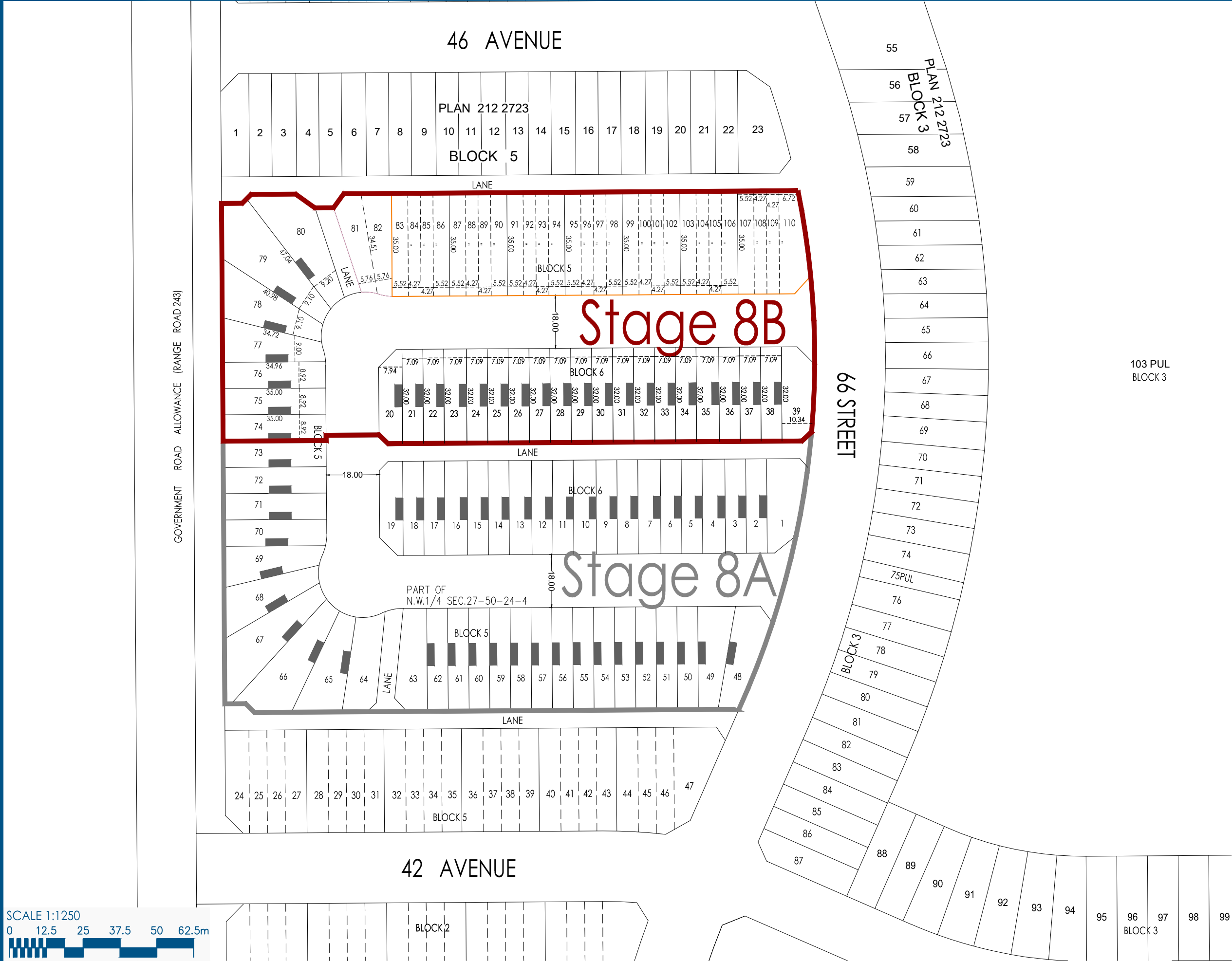
Projected Coordinate System
CANADA NAD 83-3TM 114

Legend

- Boundary of SDA-24-20
- Registered Parcels
- Proposed Subdivision



L:\Projects\BEAUMONT\Ruisseau\Stage 8\Planning\01_ACAD\lp_ruisseau_stage_08_30pm2025.dwg



LOCATION PLAN
NOT TO SCALE

SHOWING PROPOSED SUBDIVISION OF PART OF:
"N.W. 1/4 SEC. 27-50-24-W4M"

NOTES:

THIS IS NOT A LEGAL PLAN AND MAY BE SUBJECT TO ERRORS AND/OR OMISSIONS.

ALL DISTANCES ARE SHOWN IN METRES AND DECIMALS THEREOF. DISTANCES ON CURVED BOUNDARIES ARE ARC LENGTHS.

AREA DEALT WITH BY THIS PLAN SHOWN BOUNDED AS THUS.

ZERO LOT LINE DENOTED AS THUS.

STATISTICS:

| | |
|-------|-----------|
| CN | 27 LOTS |
| IN | 30 LOTS |
| TOTAL | = 57 LOTS |

AREAS:

| | |
|------------------|-----------|
| ROADS & LANES | = 0.36 ha |
| RESIDENTIAL LOTS | = 1.32 ha |
| TOTAL | = 1.68 ha |

TENTATIVE PLAN

RUISSEAU - STAGE 8B

BEAUMONT - ALBERTA

January 30, 2025

QUALICO[®]
communities