



**Subdivision Authority Agenda  
Monday May 5, 2025**

**1. The Subdivision Authority will review the following proposed Subdivisions on May 9, 2025**

**a. SDA23-03 Beau Val Phase 7 (Lot Split)**

Tentative plan to subdivide a portion of Plan 202 2084; Block 5; Lot 3 into two lots

- *Attachments: Location Map and Tentative Subdivision Plan*

**2. The Subdivision Authority's decision will be posted the week of May 12, 2025**

---

Contact the File Planner at [planning@beaumont.ab.ca](mailto:planning@beaumont.ab.ca) or 780-929-8782 for more information



City of Beaumont  
5600 49 Street  
Beaumont, AB  
T4X 1A1

## Location Map - SDA-23-03 Lot Split

Numeric Scale:

1:2,000

Date - mm/dd/yr

09/04/2023

Mapped by:

Uche.D

Projected Coordinate System:

CANADA NAD 83-3TM-114

Checked by:

Coralie.V

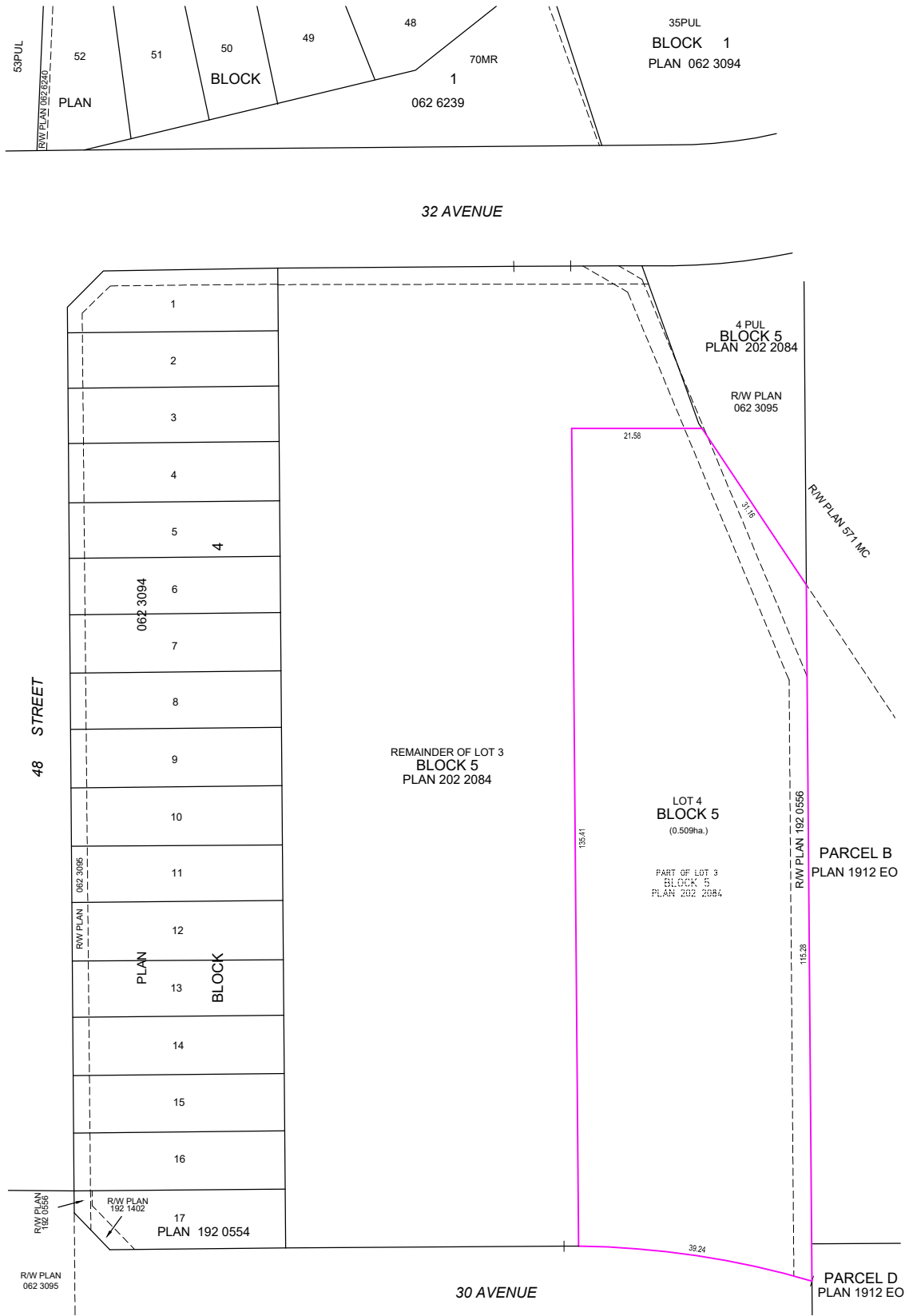
Disclaimer:

ALL RIGHTS RESERVED. NO PART OF THIS MAP MAY BE REPRODUCED IN ANY FORM OR BY ANY MEANS WITHOUT THE WRITTEN CONSENT OF THE CITY OF BEAUMONT. THE CITY OF BEAUMONT PROVIDED THIS INFORMATION IN GOOD FAITH, BUT PROVIDES NO WARRANTY NOR ACCEPTS ANY LIABILITY ARISING FROM INCORRECT, INCOMPLETE OR MISLEADING INFORMATION OR ITS IMPROPER USE. INFORMATION IS MAINTAINED ON A REGULAR BASIS. DO NOT REPRODUCE WITHOUT PERMISSION. 2022 AERIAL IMAGERY  
City of Beaumont 5600 49 Street Beaumont Alberta T4X 1A1 Telephone: 780-929-8782 Web: www.beaumont.ab.ca

## Legend

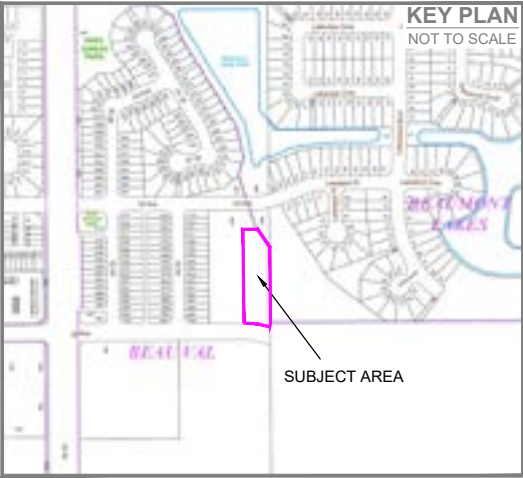
- Boundary No: SDA-23-03
- Proposed Parcel Boundary
- Beau Val Neighbourhood Boundary
- Registered Parcels

O:\2023\123001000 East Pine LP Condominium\CADD\123001000T1.dwg, 7/26/2023 2:14:37 PM



EAST PINE LP

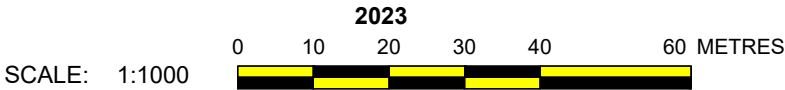
- NOTES:**
- ALL DISTANCES ARE SHOWN IN METRES AND DECIMALS THEREOF.
  - ALL DISTANCES ON CURVED BOUNDARIES ARE ARC LENGTHS.
  - ALL INFORMATION SHOWN ON THIS PLAN IS BOTH TENTATIVE AND PRELIMINARY, AND SUBJECT TO CHANGE BY THE 'PLAN OF SURVEY'.
  - THE BOUNDARY SHOWN, EVEN IF ANNOTATED, IS SUBJECT TO CHANGE BY THE 'PLAN OF SURVEY'.
  - THE ZONING OF THIS SUBJECT AREA IS 'IN'.
  - PLAN TO BE SUBDIVIDED SHOWN OUTLINED THUS. \_\_\_\_\_ AND CONTAINS: 0.509 ha.



|          |           |                         |    |
|----------|-----------|-------------------------|----|
|          |           |                         |    |
|          |           |                         |    |
|          |           |                         |    |
| 0        | JULY21/23 | ORIGINAL PLAN COMPLETED | RH |
| REV. NO. | DATE      | ITEM                    | BY |

REVISIONS

**EAST PINE LP**  
TENTATIVE PLAN SHOWING PROPOSED  
**SUBDIVISION**  
OF  
PART OF LOT 3, BLOCK 5, PLAN 202 2084  
WITHIN THE  
S.W. 1/4 SEC. 26 - TWP. 50 - RGE. 24 - W. 4TH MER.  
**BEAUMONT - ALBERTA**



Phone: (780) 455 - 3177 Fax: (780) 451 - 2047  
Email: edmonton@palsgeomatics.com  
10704-176 Street NW, Edmonton, Alberta T5S 1G7

|          |             |             |    |             |    |
|----------|-------------|-------------|----|-------------|----|
| FILE NO. | 123001000T1 | DRAFTED BY: | RH | CHECKED BY: | MK |
|----------|-------------|-------------|----|-------------|----|