



**Subdivision Authority Agenda
Tuesday, November 12, 2024 at 1:00pm**

1. The Subdivision Authority will review the following proposed Subdivision on November 12, 2024:

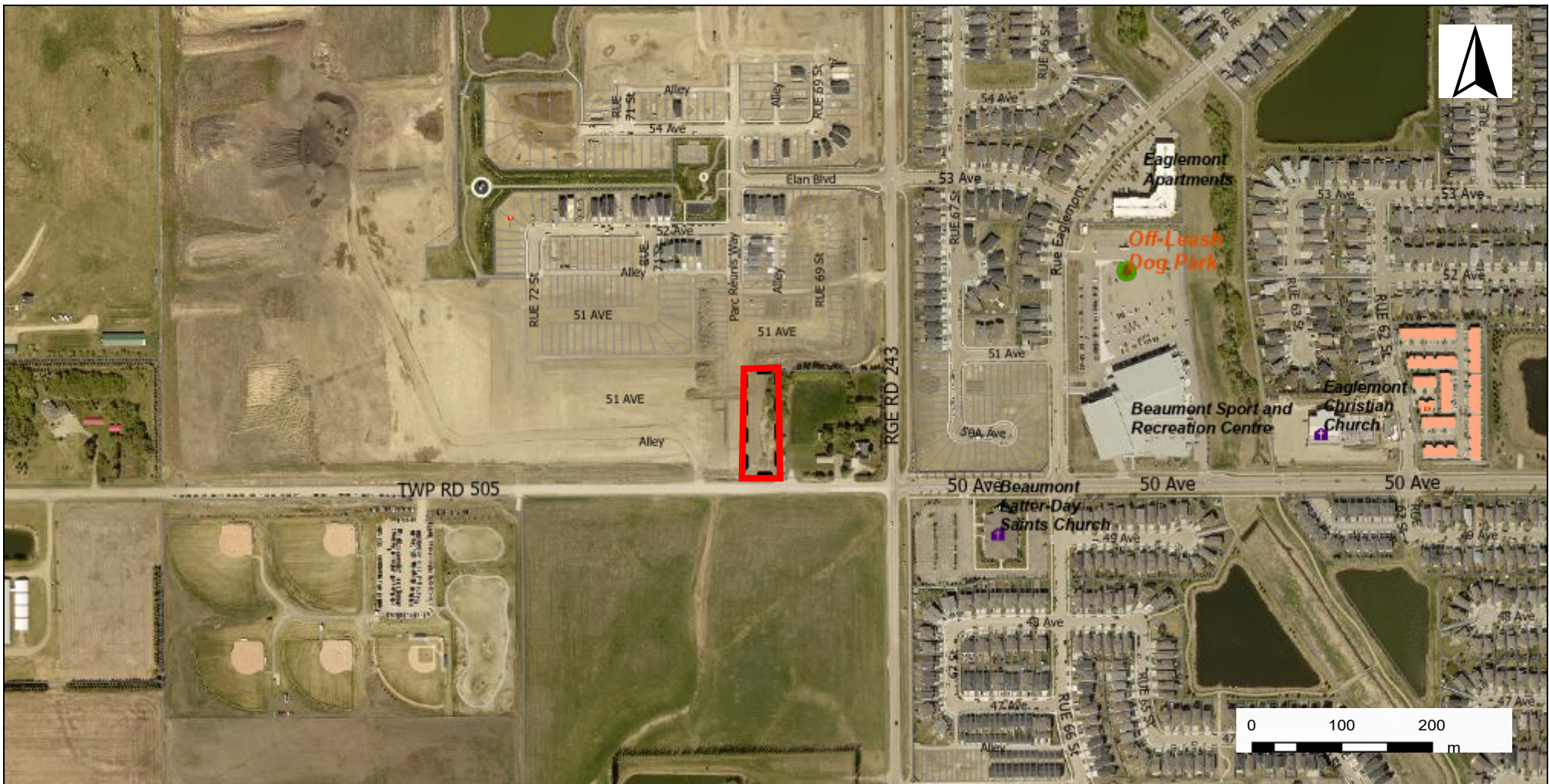
a. SDA-24-13 Elan Phase 5

Tentative plan of subdivision to create one commercial lot

- *Attachments: Location Map and Tentative Subdivision Plan*

2. The Subdivision Authority's decision will be posted on November 15, 2024

Contact Matthew Gratton, Senior Planner at planning@beaumont.ab.ca for more information.



City of Beaumont
5600 49 Street
Beaumont, AB
T4X 1A1

Location Map

Portion of QS SE 33-50-24-W4M

Application No.
SDA 24-13

Mapped By:
Kendra Raymond

Checked By:
Aleshia Ingram

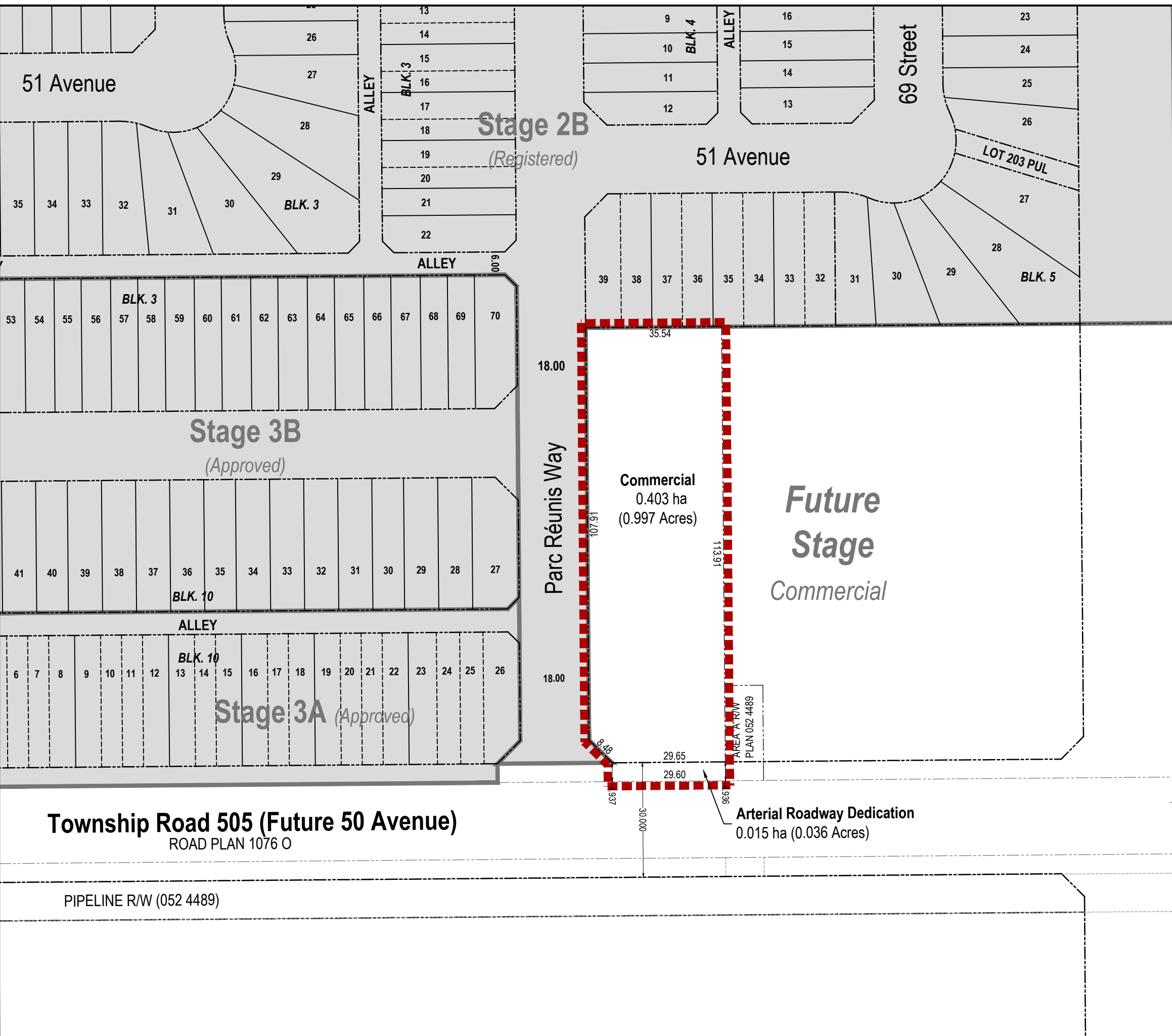
Numeric Scale
1: 6427

Date
August 26, 2024

Projected Coordinate System
CANADA NAD 83-3TM 114

Legend

- Location: Elan Phase 5
- Registered Parcels



Government Road Allowance (Range Road 243)

LEGEND:

- Elan Commercial Boundary
- Elan Stage 2B & 3A & 3B Subdivision Boundary

NOTES:

- All distances are shown in metres and decimals thereof.
- Distances on the curved boundaries are arc lengths.
- Area dealt with by this plan shown bounded thus contains: **0.418 ha**.

THIS IS A CONCEPT PLAN ONLY. SUBJECT TO CHANGE.

DATE: JULY 10, 2024

PROJECT MANAGER: STEPHANIE_FOSSEN


CLIENT: DREAM UNLIMITED CORP.

PROJECT: ELAN COMMERCIAL
S.E. 1/4 SEC. 33-50-24-W4M

DRAWING TITLE: TENTATIVE PLAN OF SUBDIVISION

SCALE: 0 10 20 30 40 50
1:1000

PROJECT NO/ DRAWING NO: 2024004-001



Invistec Consulting Ltd.
Suite 1700, 10130 - 103 Street NW
Edmonton, Alberta, T5J 3N9
(780) 293 - 7373
www.invistec.ca

THE CONTRACTOR SHALL VERIFY AND BE RESPONSIBLE FOR ALL DIMENSIONS. DO NOT SCALE THE DRAWING. ANY ERRORS OR OMISSIONS SHALL BE REPORTED TO INVISTEC CONSULTING LTD. AS SOON AS POSSIBLE.

THE COPYRIGHTS TO ALL DESIGNS AND DRAWINGS ARE THE PROPERTY OF INVISTEC CONSULTING LTD. REPRODUCTION OR USE FOR ANY PURPOSE OTHER THAN THAT AUTHORIZED BY INVISTEC CONSULTING LTD. IS PROHIBITED.