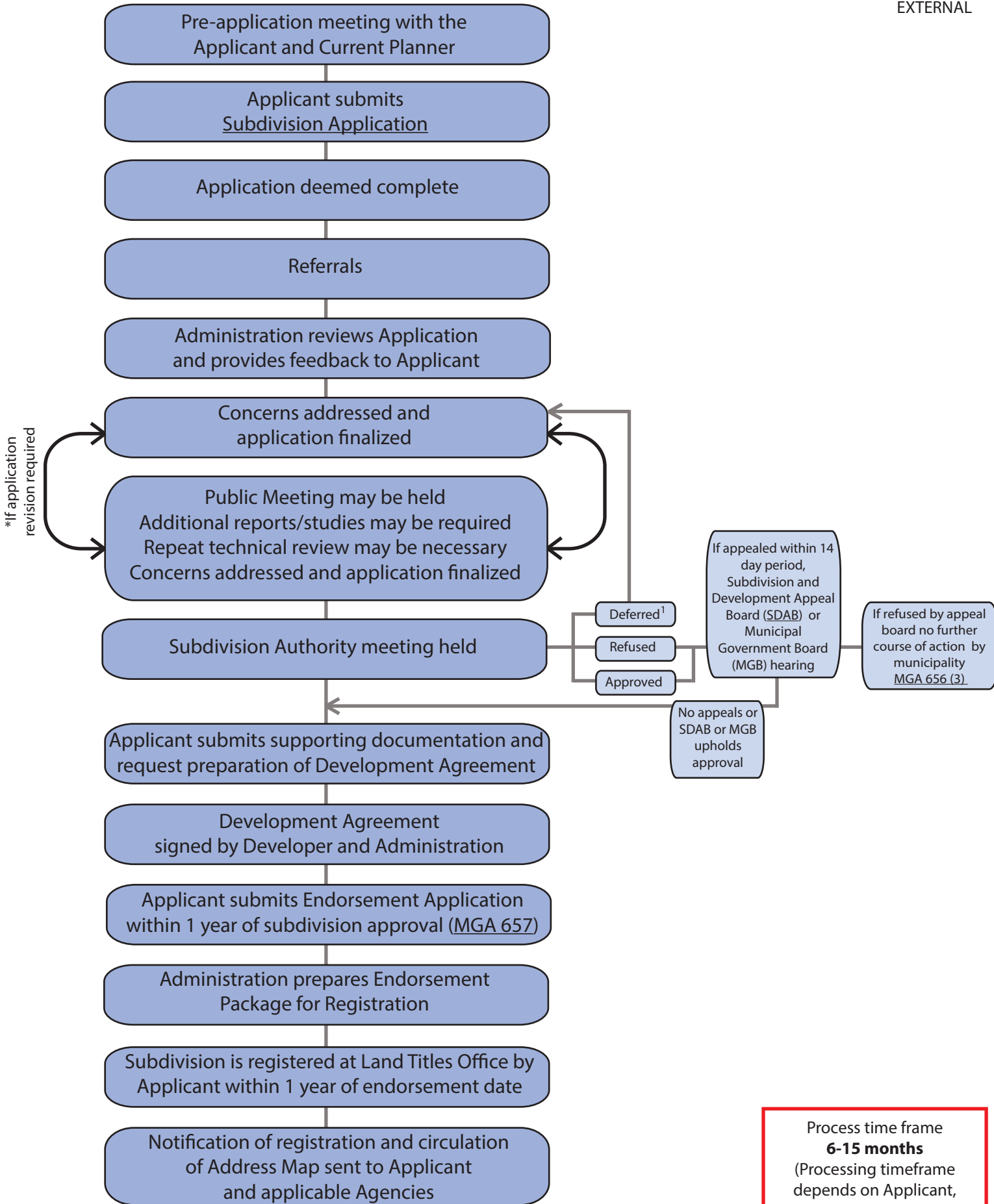


# Subdivision Process



EXTERNAL



Process time frame  
**6-15 months**  
 (Processing timeframe depends on Applicant, submissions and possible revisions required)

This diagram describes a General Subdivision Process.  
 \* Within the application revision, this describes Subdivision Amendment and may need Supplementary Reports.  
 1. Subdivision Authority may request to defer application, if further information is required.